



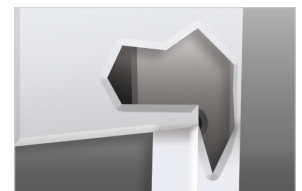
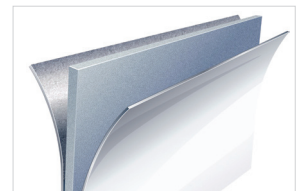
Base model shown with added options

Durable Resilience for the Demanding Haul

From appliance delivery, to municipalities, to rental fleets, the Signature Van is the choice for efficient dry freight delivery. Available in a variety of sizes and packed with features to haul more, protect cargo and resist damage, the Signature Van is up to any dry freight delivery challenge.

Features

- DuraPlate® sidewalls for extreme durability and damage resistance with minimal weight
- One-piece molded V-groove threshold protects rear entry and eases cleaning
- Durable, top internal steel gussets for rear frame reinforcement
- Many options to address bulk items and cargo control challenges
- Solutions available for traditional, alternative fuel and electrified chassis



Specifications: Signature Van

Width	Length	Height					
		79"	85"	91"	97"	103"	109"
90"	12'	•	•	•			
	14'	•	•	•			
	16'	•	•	•	•		
96"	12'	•	•	•			
	14'	•	•	•			
	16'	•	•	•	•		
	18'		•	•	•		
	20'		•	•	•	•	
	22'		•	•	•	•	•
	24'		•	•	•	•	•
	26'			•	•	•	•
28'				•	•	•	
102"	18'		•	•	•		
	20'		•	•	•	•	
	22'		•	•	•	•	•
	24'		•	•	•	•	•
	26'			•	•	•	•
	28'				•	•	•
30'				•	•	•	

Available sizes limited by chassis type

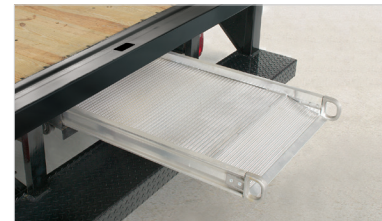
Chassis Type	• Cab
Truck Body Type	• Dry freight
Available Sidewalls	• DuraPlate • FiberPanel® (FRP) white panels • .040" smooth aluminum pre-painted white panels
Lining	• Galvanized-steel Z-wall posts; 3/8" plywood sides interior lining (Aluminum only)
Front	• FRP white front wall • Molded-composite corners with radius .063" aluminum mill finish wind deflector • Extruded-aluminum radius vertical front corners
Rear Frame	• Painted galvanized steel • 14 ga. header • 12 ga. corner posts • 10 ga. one-piece V-groove threshold • Internal gussets
Rear Door	• Premium roll-up with 6" header • Maximum Security (MS) lock
Floor	• 2" x 6" pine (up to and including 16') • 1-1/8" laminated hardwood (over 16')

Subframe	<ul style="list-style-type: none"> • 3" formed "C"-channel cross members on 16" C/L (up to and including 16') • 3" I-beam cross members on 12" C/L (over 16') • 4" I-beam longills • Full-perimeter steel reinforcing aluminum rub rail • Pre-coated understructure
Roof	<ul style="list-style-type: none"> • One-piece .032" aluminum skin • Galvanized-steel anti-sag roof bows on 24" C/L
Interior Lights	• LED dome light with rear switch - hot wired
Exterior Lights	<ul style="list-style-type: none"> • LED clearance lights • Existing chassis taillights
Bumper	• Pooched ICC
Warranty	<ul style="list-style-type: none"> • 1-year white surface and leaks • 3-year/36,000-mile limited bulkhead-to-bumper warranty • 5-year limited structural warranty (roof, wall and floor structure) • See our warranty policy for details

Options Contact your representative or visit supremetruckbody.com for more options to meet your unique requirements.



Translucent Roof



Slider Ramp



Liftgate

Call 800-642-4889 Online supremetruckbody.com

Base specifications are accurate at the time of publication, and are subject to change without notice. Custom options are available; please consult your representative for additional information.
©2020 Wabash National L.P. All rights reserved.

SUP 0004 11.20

SUPREME
BY WABASH